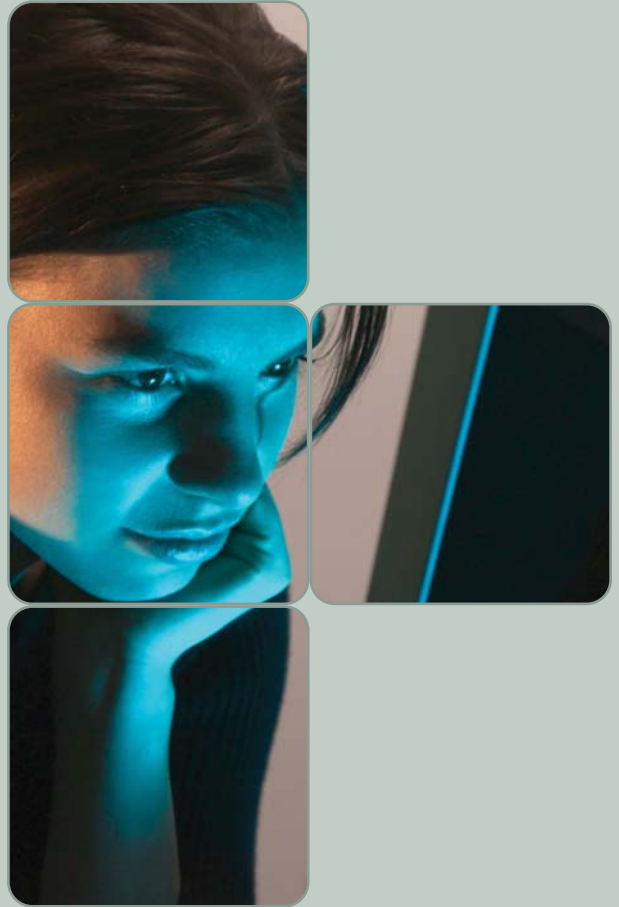


**NEW!** – Law  
– GCE support



On-line vocational resources  
<http://www.cmeducation.co.uk>



AMENITY MANAGEMENT – BUSINESS – HEALTH – LAW – LEISURE – MEDIA – RECREATION – SOCIAL CARE – SPORT – TOURISM – TRAVEL

# LIBRARIES

## VOCATIONAL COURSE LIBRARIES

*Online learning support for Level 2-4 vocational qualifications*

Now in their tenth year, CM's Digital Libraries are widely used in FE and schools to support the popular vocational courses and complement traditional textbooks.

### Digital Library Titles

- Health & Social Care
- Leisure & Recreation
- Media Studies
- Travel & Tourism

*Subject specific archive and current original sources*

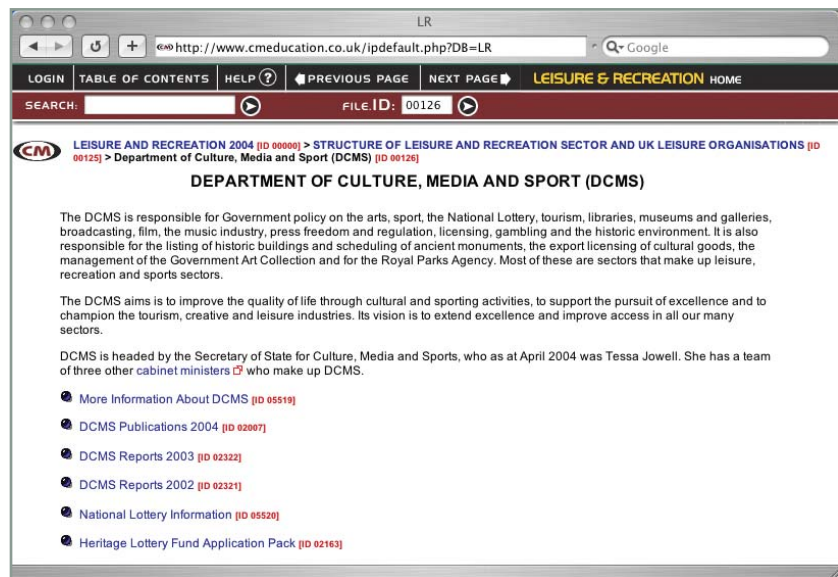
Unique in their provision of on-line vocational resources rich in both quality and quantity, the libraries are designed with two principal objectives:-

*For students & staff*

- as learning resource material for students to complement subject text-books – guiding students in their internet research while keeping them focused within the subject area
- as a resource/research tool for staff preparing lectures, assignments and project work.

*> 16,000 documents  
> 10,000 tables, charts & graphs  
> 3,000 internet links*

Each title contains a vast range of data, including a wealth of statistical information, to provide immediately relevant information as well as material for increasing subject knowledge.



*Interactive course guides, drill down navigation and search engine*

As well as the interactive course guides (see opposite), all libraries boast a fully featured search engine and intuitive drill-down navigation. The search engine uses the familiar Google®-style logic to return the most relevant resources. Alternatively, users can 'drill down' through the various library headings and sections to research their topic.

*Continuous updates*

The titles are continually updated, both in terms of content and technical back-up, with annual on-site notifications.

*Quality controlled*

Third party material is evaluated by CM Education to ensure that they meet our requirements. They are generally links to data within official/government sites; any other sites included for interest/breadth of research are marked accordingly. Links are to precise data, not to "home" pages. Third party sites are continually checked to ensure that links are live and relevant.

*Pinpoint accuracy*

*Posters and printed guides*

Printed guides for student use are also available upon request, as are promotional posters.

# ONLINE GUIDES

## INTERACTIVE COURSE GUIDES

### Interactive course guides

#### NQF Level 2

GCSE Health & Social Care

GCSE Leisure & Tourism

#### NQF Level 3

AVCE Health & Social Care

AVCE Leisure & Recreation

AVCE Media Studies

AVCE Travel & Tourism

BTEC Health & Social Care

HND Health & Social Care

OCR Health & Social Care

Multi-level (2-3) support  
Business Class

CM Education is delighted to add a new range of syllabus-specific guides to its widely used digital library titles.

Derived from established specifications for **GCSE Health & Social Care** and **GCSE Leisure & Tourism**, and the latest specifications such as **A2/AS Media Studies**, each online guide follows the Unit and topic structure of the course. The easy-to-follow explanatory text then links directly to the relevant Library section and a sample of specific resources.

All guides feature **multiple-choice** self-tests at the end of each Unit and most chapters. These are designed to reinforce key ideas and flesh out the theory with real-world examples, and maintain **learner interest** with a high degree of **interactivity**.

The screenshot shows a web browser window displaying the online course guide. The browser address bar shows the URL: <http://www.cmeducation.co.uk/ipdefault.php?DB=HSC&SYL=AVCE>. The page has a navigation bar with 'LOGIN', 'TABLE OF CONTENTS', 'HELP?', 'PREVIOUS TOPIC', and 'NEXT TOPIC'. Below this is a 'CLOSE COURSE MENU' and a search bar. The main content area is titled 'UNIT 1 - EQUAL OPPORTUNITIES AND CLIENTS' RIGHTS' and 'Sources of support and guidance'. A table of contents on the left lists various topics, with 'Sources of support & guidance' highlighted. A 'Library Homepage' icon is at the bottom left. A text box on the right provides an overview of the unit's content and lists key organizations that challenge discrimination.

Students need to know about the role and key functions of organisations that challenge discrimination. These include:-

- o The Equal Opportunities Commission - see especially the short guide to the Equal Opportunities Commission
- o The Commission for Racial Equality (especially Without prejudice, Code of practice in maternity services, NHS contracts and racial equality, Code of practice in primary health services - summary and Code of practice in primary health services)
- o Disability Rights Commission (formerly the National Disability Council for the UK) including links to the separate Commissions for Scotland and Wales
- o The Council of Europe and the Court of Human Rights
- o The Health Education Authority
- o The Basic Skills Unit (formerly the Adult Literacy and Basic Skills Unit)
- o Numerous voluntary agencies and self-help groups

Students need to know about the role and key functions of organisations that challenge discrimination. These include:-

- o The Equal Opportunities Commission
- o The Commission for Racial Equality (especially Without prejudice, Code of practice in maternity services, NHS contracts and racial equality, Code of practice in primary health services - summary and Code of practice in primary health services)
- o Disability Rights Commission (formerly the National Disability Council for the UK) including links to the separate Commissions for Scotland and Wales
- o The Council of Europe and the Court of Human Rights
- o The Health Education Authority

The **Unit titles** open to show the **topic headings** covered in the Unit. Clicking on the heading of interest opens the first page of the eponymous chapter in the right hand frame.

The **Test** link reveals the first of up to a dozen multiple-choice questions relevant to the Unit.

Clicking on the **Library Homepage** icon takes the learner to the homepage of the underlying Digital Library – see opposite.

The text of the guide both informs learners of what they are expected to know, and is rich with links to resources within the underlying Digital Library which support the topic.

**Links** can be to the relevant section of the Digital Library, or to specific resources within it. Thus students are directed to the core references whilst retaining the option of conducting their own wider-ranging research of the topic.

# ONLINE TEXTBOOKS

## legalease



A2 | AS | GCSE

### Law

#### Checklist

Levels supported: 2-3

Self-test questions

VLE-compatible

Accessibility Level AAA

The new LegalEase series is being developed to plug the gap in electronic resources for students of Law and related subjects.

Based on the popular textbook and self-test format of BusinessClass, these online textbooks go beyond merely following the course specification headings and subjects.

Designed to maximise learning and retention, students are compelled to interact with the resource with decision points and tests. The electronic medium is used to bring the subject to life with pictures and graphics, interesting background information, quizzes and discussion topics. Complex questions are broken down into easily-understood flow charts, illustrated with memorable examples.

Topics covered include law-making institutions, how the law is interpreted and by whom, as well as the traditional disciplines of criminal, contract, tort, and the more recent branches of consumer protection and human rights.

GCSE, AS and A2 (based on the AQA specifications) versions will be available for the forthcoming academic year.

## businessclass



GCSE

### Applied Business and Business Studies

#### Checklist

Level supported: 2

Self-test questions

VLE-compatible

Accessibility Level AAA

Curriculum Online Approved

Newly created to support the two major GCSE specifications, these adaptations of CM Education's popular interactive business textbook follow the Unit and topic headings of the **Applied Business** and **Business Studies** courses.

Building on the successful combination of simple, accessible text and graphics, and multiple-choice self-tests, these new versions of Business Class boast up-to-date examples and reflect the latest in current business studies pedagogy.

In the **Applied Business** version, the 3 Units are broken down into 42 topics. Each reflects the course specification sub-headings, and coverage ranges in size from a single explanatory page to 20 pages, depending on the information density required. Most are followed by a **low-stakes quiz** which builds upon the knowledge just acquired, broadens the **depth and understanding** of the subject with **real-world examples** and a limited amount of new information, and maintains **learner interest** with a high degree of **interactivity**.

The **Business Studies** variant contains examples and questions arranged according to the differing emphasis of the specification, most notably in **marketing** and **production**.

**Case study material** and **targeted web links** are being added and updated, providing real-life source material which adds depth to the theory and a platform for the **Applied Business** investigation into two contrasting businesses.

LEVELS 2-3

### Business Class

#### Checklist

Levels supported: 2-3

Self-test questions

VLE-compatible

Accessibility Level AAA

Curriculum Online Approved

Business Class is a web-based learning tool aimed at both newcomers to business-related courses and those wishing to revise or reinforce their learning. Business Class's mixture of textbook-style content and interactive multiple-choice questions allow it to be used as a primer, or in conjunction with course books as a digest of the key points and a test bed for their understanding.

# GCSE GUIDES

## health & social care



### The Library

Recent updates include new data on human rights legislation, NHS organisational structure, child protection (including adoption and fostering) and disability rights.

#### Sections on:

- The reforms of the NHS
- Community Care
- Poverty and ill-health
- Criminal justice
- Ethical issues
- World Health Organisation reports
- Nutrition
- Mental health
- Alcohol and drug abuse

...and many more. Includes full-text government White Papers/reports; plus surveys/research by UK charities.

CurriculumOnline approved.

### GCSE

## Health & Social Care

Newly created to support the GCSE Health and Social Care qualification, this interactive course guide links into the full Health and Social Care library. Thus users have access to probably the largest single compilation of learning/teaching resource materials on Health and Care in the UK.

### Interactive course guide

The guide follows the GCSE topics as follows:

#### Unit 1: HEALTH & SOCIAL CARE & EARLY YEARS PROVISION

- Care needs of major client groups
- Types of care services
- Care services/Barriers to access
- Main jobs in HSC & early years services
- Value bases of care work
- Legislation, policies & codes of practice
- How organisations promote equality
- Effects on clients of discriminatory practice
- Resourcing levels

#### Unit 2: PROMOTING HEALTH & WELL-BEING

- Risks to health & well-being
- Health promotion/education

#### Unit 3: DEVELOPMENT & RELATIONSHIPS

- Factors affecting development

Each Unit is followed by a twelve-question multiple-choice quiz for self-testing purposes.

### The Library

Recent updates to the libraries include complete new sections on legislation, theme parks/gardens, careers, Best Value, new material from ILAM, company data, country-specific material and the latest official tourism statistics.

#### Sections include:

- UK government reports on the future of tourism, leisure and recreation
- WTTC reports
- Statistics from WTO and WTTC
- Tourism and the Environment
- Case studies of operators
- Case studies of regional localities
- Surveys on participation in sport
- Leisure organisations & facilities
- The countryside and recreation
- Leisure for disabled people
- Relevant legislation
- Careers information

CurriculumOnline approved.

### GCSE

## Leisure & Tourism



Newly created to support the GCSE Leisure and Tourism qualification, this interactive course guide links both the Leisure and Recreation and Travel and Tourism libraries. Thus subscribers have access to two substantial libraries, seamlessly brought together by a guide to the GCSE topics.

### Interactive course guide

The guide follows the GCSE topics as follows:

#### Unit 1: INVESTIGATING LEISURE & TOURISM

- The leisure industry
- The travel & tourism industry
- Links between leisure & tourism

#### Unit 2: MARKETING IN LEISURE & TOURISM

- What is marketing?
- Target marketing
- Market research
- The marketing mix
- Promotion & promotional campaigns
- SWOT & PEST analysis

#### Unit 3: CUSTOMER SERVICE

- Identifying customer needs
- Ensuring customer needs are met
- Staff Training

Each Unit is followed by a twelve-question multiple-choice quiz for self-testing purposes.

# LEVEL 3 GUIDES

## health & social care



**A2 | AS | AVCE | BTEC | OCR | HND**  
**Health & Social Care**

Now including coverage of the specification for A2/AS GCE, these interactive course guides link into the full Health & Social Care library. Thus users have access to probably the largest single compilation of learning/teaching resource materials on Health & Care in the UK.

### Interactive course guide

Each guide follows the relevant course specifications through the Units supported by the library. Below is the A2/AS GCE menu:

- Unit 1: HUMAN GROWTH & DEVELOPMENT
- Unit 2: COMMUNICATION & VALUES
- Unit 3: POSITIVE CARE ENVIRONMENTS
- Unit 4: SOCIAL ASPECTS & LIFESTYLE CHOICES
- Unit 5: ACTIVITIES FOR HEALTH & WELL-BEING
- Unit 6: PUBLIC HEALTH
- Unit 7: MEETING INDIVIDUAL NEEDS
- Unit 8: PROMOTING HEALTH & WELL-BEING
- Unit 9: INVESTIGATING DISEASE
- Unit 10: USING & UNDERSTANDING RESEARCH
- Unit 11: SOCIAL ISSUES & WELFARE NEEDS
- Unit 12: UNDERSTANDING HUMAN BEHAVIOUR

### The Library

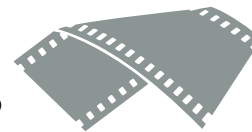
Recent updates include new data on human rights legislation, NHS organisational structure, child protection (including adoption and fostering) and disability rights.

#### Sections on:

- The reforms of the NHS
- Community Care
- Poverty and ill-health
- Criminal justice
- Ethical issues
- World Health Organisation reports
- Nutrition
- Mental health
- Alcohol and drug abuse

...and many more. Includes full-text government White Papers/reports; plus surveys/research by UK charities.

## media studies



**A2 | AS | AVCE**  
**Media Studies**

Now including coverage of the specification for A2/AS GCE, these interactive course guides link in to the Media Studies library. Thus users have access to extensive operational and statistical information on the media industry world-wide, both archival and via the most recent on-line links. New material features **case studies** on newspaper production, magazine production and film production.

### Interactive course guide

Each guide follows the relevant course specifications through the units supported by the library. Below is the A2/AS GCE menu:

#### UNIT 1: INDUSTRIES, TEXTS & AUDIENCES

- How the media industry is structured
- How a media company is organised
- How media texts are constructed in relation to their audiences
- How audiences use media products

#### UNIT 2: SKILLS FOR MEDIA PRODUCTION

- Research methods and techniques
- The different purposes of research
- The production technology available
- Production techniques and skills

#### UNIT 3: MEDIA PRODUCTION BRIEF

- Pre-production skills and techniques
- Production skills and techniques
- Post-production skills and techniques
- How to evaluate your production

#### UNIT 4: RESEARCH & DEVELOPMENT FOR MEDIA PRODUCTION

- How to originate and research ideas
- How to research audience and viability
- How to develop a production
- How to present ideas and findings

#### UNIT 5: MEDIA PRODUCTION PROJECT

- How to plan a production
- How to manage a production

#### UNIT 6: PROFESSIONAL PRACTICE IN THE MEDIA INDUSTRIES

- Taking account of the relevant constraints in your production work
- Evaluating your work
- Assessing your management
- Evaluating your achievement

### The Library

Recent updates include complete new sections on new technology, especially those in line with newsroom techniques.

#### Important areas include:

- Broadcasting regulations
- Careers information
- Major media companies
- Media ownership
- New technology
- Print media (newspapers and magazines)
- Radio in the UK
- TV in the UK

Also contains detailed documentation and explanation of the media industry in the UK.

# LEVEL 3 GUIDES

## travel & tourism



### The Library

National and international statistics, in-depth reports on sustainable/ethical tourism; numerous national government and tourist board reports on tourism strategy and the marketing of tourism.

Recent updates include new data on careers, companies and country-specific material plus the latest official tourism statistics.

Important areas include:

- UK government reports on the future of tourism
- WTTC reports
- Statistics from WTO and WTTC
- Tourism and the Environment
- Worldwide trends in Travel & Tourism
- Case studies of operators
- Case studies of regional localities
- Careers information

### A2 | AS | AVCE

## Travel & Tourism

Now including coverage of the specification for A2/AS, these interactive course guides link into the full Travel & Tourism library. Thus users have access to detailed data on every country in Europe as well as a range of non-European countries; and a wealth of information from UK tourist boards, both national and regional.

### Interactive course guide

Each guide follows the relevant course specifications through the units supported by the library. Below is the A2/AS menu.

UNIT 1: THE TRAVEL & TOURISM INDUSTRY

UNIT 2: THE TRAVEL & TOURISM CUSTOMER

UNIT 3: DESTINATION EUROPE

UNIT 4: DESTINATION BRITAIN

UNIT 5: TRAVELLING SAFELY

UNIT 6: RESORT OPERATIONS

UNIT 7: RESPONSIBLE TOURISM

UNIT 8: CURRENT ISSUES IN TRAVEL & TOURISM

UNIT 9: WORKING IN TRAVEL & TOURISM

UNIT 10: PROMOTION AND SALES IN TRAVEL & TOURISM

UNIT 11: SPECIAL INTEREST HOLIDAYS

UNIT 12: TRAVEL ORGANISATIONS

### The Library

Recent updates include complete new sections on legislation, theme parks/gardens, careers, Best Value and ILAM.

Important areas include:

- UK government reports on the leisure and recreation industry
- National and regional surveys on participation in sport
- Leisure organisations in the UK
- The countryside and recreation
- Leisure for disabled people
- Relevant legislation
- Local provision of leisure facilities
- Careers information

### A2 | AS | AVCE

## Leisure & Recreation



Now including coverage of the specification for A2/AS GCE Leisure Studies, these interactive course guides link into the Leisure & Recreation library. Thus users have access to wide-ranging statistical and explanatory data on the sport, leisure, recreation and amenity management industries in the UK, including new material from the **Institute of Leisure & Amenity Management** and an in-depth case study on **Blue Reef Aquarium**.

### Interactive course guide

Each guide follows the relevant course specifications through the units supported by the library. Below is the A2/AS GCE Leisure Studies menu.

UNIT 1: THE LEISURE INDUSTRY

- The range, scale and importance of the leisure industry in the UK and Europe
- Commercial and other sectors
- Customers of the leisure industry
- Current developments in the industry

UNIT 2: WORKING PRACTICES IN LEISURE

- Safe working practices
- Quality systems
- Business systems

UNIT 3: THE LEISURE CUSTOMER

- The leisure customer
- Operational aspects
- Marketing activities
- Dealing with leisure customers

UNIT 4: LEISURE IN ACTION

- Choice of event
- Feasibility of event
- Teamwork
- Carrying out the event
- Evaluating the event

UNIT 5: EMPLOYMENT IN LEISURE

- Employment practices in leisure
- Recruitment and selection in leisure
- Employment issues in leisure
- Motivating staff in leisure
- Employment law

UNIT 6: CURRENT ISSUES IN LEISURE

- Issues in leisure
- Leisure research project

## CUSTOMER COMMENTS...

“Can I just say again how impressed we are with the databases. My academic staff are delighted with them.”

“I have found them excellent, and I am sure they will be a very good addition to our resources.”

“The resource is a popular one with our students and there is no real alternative on the market.”

“Immensely useful. The Health & Social care title can be used for A Levels, the BTEC childhood studies and Nursery Nursing courses”

*Extracts (with kind permission) from the FERL/BECTA website reviews*

### Checklist for all CM resources

- approved by Curriculum Online, the NGfL and Eduserv/CHEST
- compliant with all current special needs legislation
- fully VLE-compatible
- special discounts available for multi-year subscriptions via Eduserv/CHEST

All qualifying resources  
may be purchased  
with eLCs.



[www.cmeducation.co.uk/HTML/pricing.htm](http://www.cmeducation.co.uk/HTML/pricing.htm)



### Contact Information

P.O. Box 521, Taunton, Somerset. TA3 6YB

Contact: Susan George

Tel: 01460-281775

Fax: 01460-281853

email: [edu@cmeducation.co.uk](mailto:edu@cmeducation.co.uk)

web: <http://www.cmeducation.co.uk>

0800 085 4603